

MAVOLUX 5032 C/B USB

Illuminance meters of the precision class C or B

Features

- Precision meters for measuring the illuminance in Lux and Footcandles meeting Standard Specification DIN 5032-7, Class C or B and EN 13032-1, Appendix B
- The silicon photo diode is colour corrected, i.e. its spectral responsivity is matched to the photopic daylight vision of the human eye $V(\lambda)$.
- Luminance can be measured in cd/m^2 or fL when using the Luminance Attachment (optional accessory)
- Cosine correction for light incident at an angle
- Easy to use
- 3 ½ digits display
- Backlight display illumination (only in MAVOLUX 5032 B USB)
- Data storage of up to 100 measurements
- Auto and manual range selection
- USB Port 1.1
- CD-Rom with software for processing the values measured and controlling the meter
- Compact transport case and USB cable included



The GOSSEN digital precision luxmeters are classified according to DIN 5032-7 in Class C or B and EN 13032-1, Appendix B. Wide range of applications: for lighting engineers and specifiers, for the control of light sources, street lights, lighting of work places, public buildings, sport facilities, for quality control and quality assurance in the manufacture of lamps and light sources, for light designers and architects, for light measurements in agriculture, gardening and forestry.

Both MAVOLUX types are optimally suited for measuring very high light intensities (brightest daylight, head lights) without any additional accessories. Especially the MAVOLUX 5032 B USB having an initial sensitivity of 0.01 lx also allows measuring extremely low light intensities, such as emergency lighting. Most important: Due to its high precision acc. to Class B, the MAVOLUX 5032 B USB has been approved for certification and official inspection procedures.

When attaching the Luminance Attachment to the measuring probe of the MAVOLUX 5032 C or B USB, they can be used also for measuring the luminance; the measuring angle being approx. 20° . Luminance is the reflected light effect of self luminous or reflecting surfaces. The measuring unit is candela per square meter (cd/m^2) or foot Lambert (fL).

Calibration Certificate

When required, to be specifically ordered together with the lightmeter. Please see page 12 of this brochure for more information.

MAVOLUX 5032 C/B USB

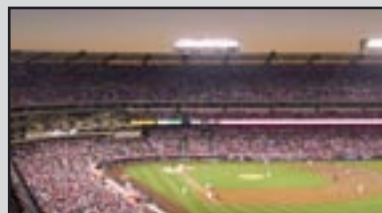
Specifications:

Model	MAVOLUX 5032 C USB	MAVOLUX 5032 B USB
Type	Illuminance meter for measuring light	
Accuracy	Class C acc. DIN 5032-7	Class B acc. DIN 5032-7
LCD Display	3 1/2 digits	3 1/2 digits, with backlight display illumination
Light sensor	Silicon photo diode with V (λ) filtering	
Measuring unit	Lux or footcandle (fc) and with Luminance Attachment cd/m ² or foot Lambert (fL)	
Measuring ranges	Automatic and manual measuring range selection	
	0.1 lx to 199 900 lx and 1 cd/m ² to 1 999 000 cd/m ² in 4 ranges (with Luminance Attachment)	0.01 lx to 199 900 lx and 0.1 cd/m ² to 1 999 000 cd/m ² in 5 ranges (with Luminance Attachment)
Data memory	100 individual measuring values	
Measuring rate	2 measurements per second	
USB Port	USB 1.1	
Operating temperature	0° C to 50° C According EN 61010-1:2001, cl. 1.4.1	
Storage temperature	-20°C to +70° C	
Power supply	1 x 1,5 V, size AA , when meter is connected to PC, power will be supplied via USB cable	
Software	gLux Software and additional applications	
Connection cable	1.5 m cable, firmly attached	1.5 m cable (plugged in)
Weight	200 g without battery	
Standard Accessories	Lightmeter in transport case, gLux Software incl. meter driver, USB cable, battery, instruction manual	
Optional Accessories	Luminance Attachment (measuring angle 20°) Adapter disk for luminance contact measurement (eliminating light incident from the sides)	

Applications - Examples:



Measuring the emergency lighting in emergency exits



Sports Arenas



TV Studios

MAVOLUX 5032 C/B USB

The MAVOLUX 5032 C/B USB is supplied in a practical and compact transport case.



Optional accessories: Luminance Attachment, Adapter disk for eliminating light incident from the sides, with contact measurement.



Measuring probe with Luminance Attachment mounted and Adapter disk

Ordering information:

Description	Ordering code
MAVOLUX 5032 C USB incl. transport case, software, USB cable, battery, instruction manual	M502G
MAVOLUX 5032 B USB incl. transport case, software, USB cable, battery, instruction manual	M503G
Calibration Certificate for Mavolux 5032 C/B USB * (please see page 12)	H997B
Accessories for MAVOLUX 5032 C /B USB	
Luminance Attachment for measuring in cd/m ² and fL	5908V0120
Adapter disk for contact measurement (for use only with the Luminance Attachment)	M499G
Special length cables for MAVOLUX 5032 C or B USB	
3 meters for MAVOLUX 5032 C USB *	15143
5 meters for MAVOLUX 5032 C USB *	15144
10 meters for MAVOLUX 5032 C USB *	15145
3 meters for MAVOLUX 5032 B USB *	15146
5 meters for MAVOLUX 5032 B USB *	15147
10 meters for MAVOLUX 5032 B USB *	15148

* The extra length cables and the Calibration Certificates must be ordered already together with the meters.